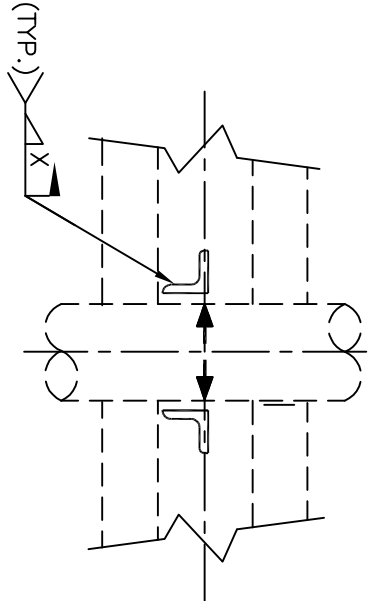
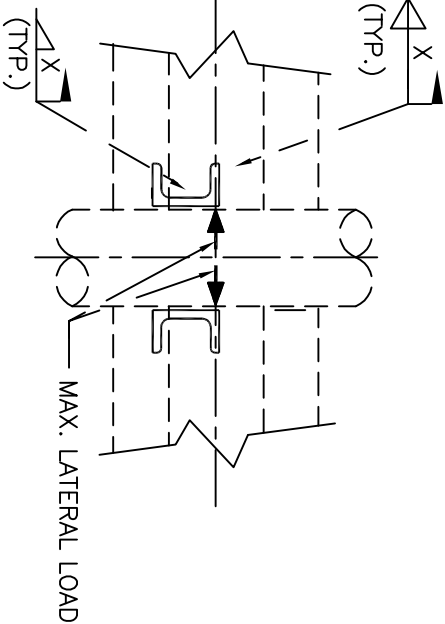
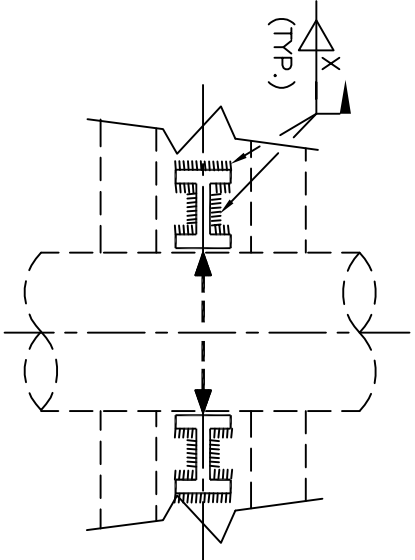
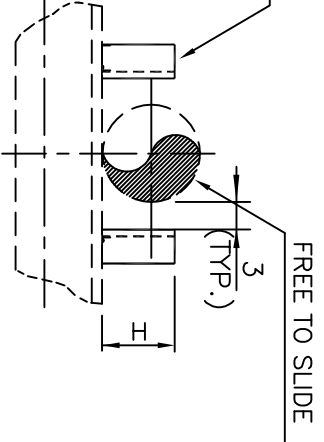
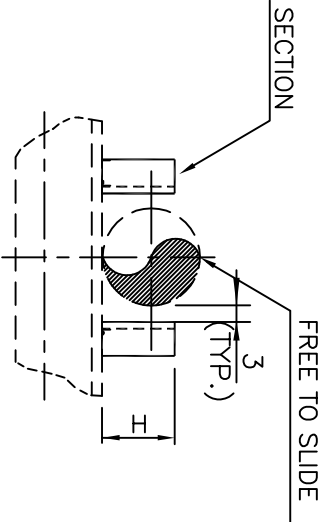
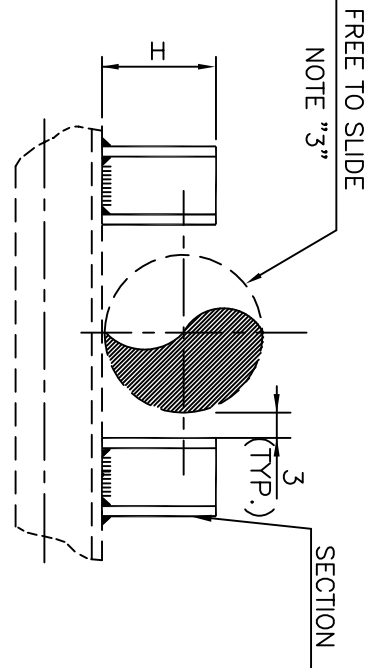


NOTES

- 1-FOR GENERAL NOTES SEE SHEET No. 4.
2-MATERIAL FOR SECTIONS SHALL BE ASTM-A36.

SC-02- (1) - (2)

1- NPS MARK
2- GUIDE GAP(mm)



10”(DN250)~24”(DN600)

06”(DN150)~08”(DN200)

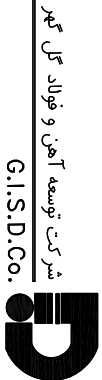
1/2”(DN15)~04”(DN100)

LOAD TABLE

NPS MARK	RUN PIPE SIZE	GUIDE	H HEIGHT	ALLOWABLE LOAD FL (KG)
0A	1/2”	L 50X50X5	40	330
0B	3/4”		40	
01	1”		40	
1A	1 1/2”		50	
02	2”	L 80X80X8	50	840
2A	2 1/2”		65	
03	3”		80	
04	4”		100	
06	6”	U 120	150	1550
08	8”		150	1200
10	10”	HEB 100	150	2250
12	12”		200	1900
14	14”		200	1750
16	16”		250	5450
18	18”	HEB 120	250	4850
20	20”		300	4350
24	24”	HEB 160	350	6600

00	5.6.2024	ISSUED FOR REVIEW	FirasHajjaj	M.A.H	L.Zeydabadi
Rev.	Date	PURPOSE OF ISSUE	Prepared	Checked	Approved
					Authorized

COMPANY:



GISDCo.

INTERNAL PROCEDURE

DRAWING TITLE:

STANDARD FOR PIPE SUPPORT DRAWING

Contract No.	Document No.	Class	Rev.	Size	Scale	Sheet No.